



Megatouch Home Installation & Owner's Manual

**FOR TECHNICAL ASSISTANCE:
CONTACT YOUR LOCAL DISTRIBUTOR**

For a list of distributors, visit us on the Web at

www.megatouch.com



PM0802-02 Rev A

Table of Contents

<p>Megatouch Requirements..... 1</p> <p>Site Preparation 1</p> <p>Initial Setup 1</p> <p>Technical Support 2</p> <p>Game Description..... 2</p> <p style="padding-left: 20px;">Touchscreen Calibration 2</p> <p>Operator Setup 2</p> <p style="padding-left: 20px;">Home Page..... 2</p> <p>Quick Access Panel 3</p> <p style="padding-left: 20px;">Quick Access Panel —Configure Network..... 5</p> <p style="padding-left: 20px;">Quick Access Panel —Machine Settings 7</p> <p style="padding-left: 20px;">Quick Access Panel —Collection and Fees..... 7</p> <p>Control Panel 8</p> <p style="padding-left: 20px;">Control Panel —Pricing and Costs 11</p> <p style="padding-left: 40px;">Quick Pricing Wizard 11</p> <p style="padding-left: 60px;">Set Credit Value 12</p> <p style="padding-left: 60px;">Set Money-In Capacity 13</p> <p style="padding-left: 60px;">Channels Setup 13</p> <p style="padding-left: 60px;">Money-In Options 14</p> <p style="padding-left: 60px;">Set Individual Tier Costs 15</p> <p style="padding-left: 60px;">Set Individual Game Costs 16</p> <p style="padding-left: 60px;">Set Internet Browser Costs 16</p> <p style="padding-left: 40px;">Credit Card Options 17</p> <p style="padding-left: 40px;">Manage Free Games 17</p> <p style="padding-left: 20px;">Control Panel —Collection and Fees..... 18</p> <p style="padding-left: 40px;">Cash Settlement Setup..... 19</p> <p>Control Panel—Games 20</p> <p style="padding-left: 20px;">Game Setup Wizard 21</p> <p style="padding-left: 40px;">Erotic Settings 21</p> <p style="padding-left: 40px;">Category Setup 22</p>	<p style="padding-left: 40px;">Editing a Category 22</p> <p style="padding-left: 40px;">Gameplay Settings 23</p> <p style="padding-left: 40px;">Extended Play 23</p> <p style="padding-left: 40px;">Internet Browser Settings 24</p> <p>Control Panel—Menu 24</p> <p style="padding-left: 20px;">Player Settings 25</p> <p style="padding-left: 20px;">Leaderboard Options..... 25</p> <p style="padding-left: 20px;">Tournamaxx Classic Setup 26</p> <p>Control Panel —Machine Settings 27</p> <p style="padding-left: 20px;">Set Machine Name 25</p> <p style="padding-left: 20px;">Set Machine Location 26</p> <p style="padding-left: 20px;">Set Advanced Filters..... 26</p> <p style="padding-left: 20px;">Restore Machine to Profile Defaults 27</p> <p>Control Panel —Jukebox 29</p> <p style="padding-left: 20px;">Set Up Jukebox 29</p> <p>Megatouch Live Player Features..... 31</p> <p>System Reset Menu..... 32</p> <p>Changing the Machine's Profile 38</p> <p>Swapping Hard Drives 33</p> <p>General Care and Maintenance 34</p> <p style="padding-left: 20px;">General Circuit Board Handling Information 34</p> <p style="padding-left: 20px;">Cleaning the Cabinet..... 34</p> <p style="padding-left: 20px;">Cleaning the Touchscreen Monitor 34</p> <p style="padding-left: 20px;">Cleaning the Fans and Vents 35</p> <p style="padding-left: 20px;">Watchdog Timer 35</p> <p>Megatouch Home Diagrams 35</p> <p>Replacement Parts 36</p> <p>Video Machine Limited Warranty 37</p> <p>Software License Agreements 38</p>
---	---

© 2012 Megatouch, LLC.

Megatouch Home and Megatouch Live are registered trademarks of Megatouch, LLC. Reproduction of this manual, in any form or by any means, is strictly forbidden without the written permission of Megatouch, LLC..

Welcome to Megatouch Home

Congratulations on the purchase of your Megatouch Home cabinet. The Megatouch Home cabinet powers the next generation Megatouch Software. Megatouch Home represents the next level in casual touchscreen gaming with incredible new graphics, HD games, local and global leaderboards, addictive player challenges and Power-Ups, and even links to social media sites like Facebook.

Site Preparation

In determining the location for your Megatouch video game, consideration must be given to a suitable, grounded electrical outlet. Since the game is a computerized device, it should have a separate circuit, if at all possible. If a separate circuit is not available, care should be taken to provide a clean and constant voltage. As a basic guideline, never connect the unit to a circuit that also supplies power to freezers, coolers or other high power consuming and electrical noise generating equipment. Place the game in a location where nothing will interfere with proper ventilation. The game should not be exposed to any dripping or splashing liquids. Objects filled with liquid should not be placed on the unit.

Initial Setup

1. Remove the game from the box, set the stand position and plug the power cord into a standard AC outlet.

IMPORTANT NOTE: All packing material should be retained in the event the game needs to be sent in for service.

2. If you are connecting the game to the Internet via a wired connection, ensure your router is on and connected to the Internet and plug an Ethernet cable from one of the LAN ports on the router to the coupler on the rear of the machine. If you intend to connect to a wireless router please see the Quick Access Panel – Configure Network section of this manual.
3. Turn the game on by pressing the power switch on the bottom of the back side of the game.

NOTE: An Internet connection is not required for the Megatouch Home unit to function but doing so will enable additional features to be available, such as an Internet browser, Global Leaderboards, and Megatouch Live Player Accounts.

4. The machine will boot automatically the player menu and the machine can be used. This machine is set to a Freeplay mode where all games can be played without charge. The menu will always display CREDITS: 999

Technical Support

If you need assistance with operator your Megatouch Home unit, please contact Megatouch Technical Support at 800-523-2760

Game Description

The Megatouch Home Countertop has one panel located on the back of the unit. To open the cabinet, remove the security screw and remove the panel.

Pressing the red operator setup button inside the rear of the cabinet will take you to the Operator Setup Home Screen (see Figure 40 for button location). Using this screen as a starting point, you can then navigate through all the options on the system and adjust these options to best suit your particular needs. For more information see the “Operator Setup” section of this manual.

NOTE: This manual describes the full functionality of a Megatouch Countertop. Many of the options described herein, money acceptance, setting game pricing, credit card options, etc. will not apply to your Megatouch Home unit.

Touchscreen Calibration

The Megatouch Home countertop features touchscreen technology that completely eliminates the need for any kind of manual touchscreen calibration.

Operator Setup

Home Page

The Home Page is the starting navigation point for your system. The most commonly used features and settings can be reached easily through the Quick Access Panel. All other features and settings can be accessed by entering the Control Panel.



FIGURE 1 – OPERATOR SETUP HOME PAGE

Quick Access Panel

The options in the Quick Access Panel are shown in the chart below.

Navigating the Quick Access Panel

When you enter any section of the Quick Access Panel, you can still easily navigate to other sections by using the buttons on the left side of the screen.

OPTION	DESCRIPTION
CONFIGURE NETWORK	<ul style="list-style-type: none"> • Configure the network connection. • View the Connection Log. This log displays a line item for every change in connection status (i.e. online to offline or vice versa). • Open the Sync Menu. This menu allows you to sync your system with the server and view software download information. • View the Tournamaxx Log. This log displays a line item for every change in connection status to the Tournamaxx server. • View the Jukebox Log: This log displays a line item for every change in connection status to a jukebox in the location.
MACHINE SETTINGS	Adjust the volume settings, clear local leaderboards, re-register, machine diagnostics and view the machine log.
COLLECTION AND FEES	View Total Cash Revenue, Total Credit Card Revenue, Fees, Balance to Split, Fee Details, and also allows you to Clear a Collection.



Touch this button at any time to enter the **Configure Network** screens.



Touch this button at any time to enter the **Machine Settings** screens.



Touch this button at any time to enter the **Collection and Fees** screens.



Touch this button at any time to enter the **Control Panel**.
NOTE: The Control Panel can only be accessed on systems with an active Internet connection.



Touch this button at any time to return to the **Operator Setup Home Page**.



Touch this button to toggle the **keyboard** on or off (if needed).



Touch this button to open the **Quick Access Panel help screens**.



Touch this button to open the **Sync Menu**. Please see the section “Sync Menu” for more details.



Touch this button to **exit** Operator Setup.

Quick Access Panel—Configure Network



FIGURE 2 – CONFIGURE NETWORK OPTIONS SCREEN

When you touch the **CONFIGURE NETWORK** button, you'll be taken to a screen offering five options: **CONFIGURE NETWORK**, **OPEN SYNC MENU**, **VIEW CONNECTION LOG**, **VIEW TOURNAMAXX LOG**, and **VIEW JUKEBOX LOG** (see Figure 4).

If you wish to view your system's connection status changes (i.e. online to offline/offline to online), touch **VIEW CONNECTION LOG**. Similarly, touching **VIEW TOURNAMAXX LOG** will display connection status changes with the Tournamaxx server, and **VIEW JUKEBOX LOG** will display connection status changes with the jukebox in the location.

If you wish to make changes to the system's network settings, touch **CONFIGURE NETWORK** to access the Configure Network screen (see Figure 5). A green dot will appear indicating your current Internet connection. A red dot indicates that the method above it is not being used to access the Internet.

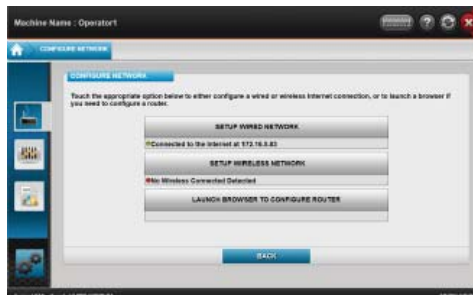


FIGURE 3 – CONFIGURE NETWORK SCREEN

To make changes to your Internet connection, please see steps 7 through 9 under "Initial Setup" earlier in this manual.

NOTE: If you are switching from a wireless connection to a wired one, you should clear the wireless settings first. To do so, touch **SETUP WIRELESS NETWORK** and touch **CLEAR ALL WIRELESS SETTINGS** on the next page.

NOTE: An easy way to tell if your machine is connected is to look at the Megatouch logo on the top of the Player Menu. If this logo is in color, the machine is connected. If this logo is grayed out, the machine is not connected.

Sync Menu

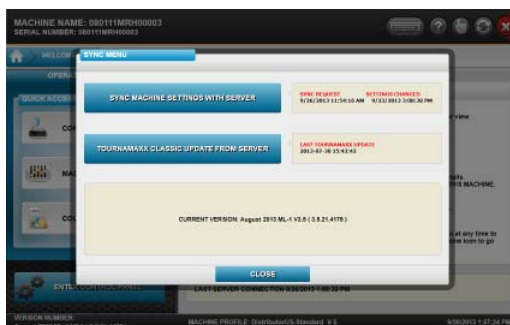


FIGURE 4 - SYNC MENU OPTIONS SCREEN

There are two main buttons located inside the Sync Menu. These buttons are: SYNC MACHINE SETTINGS WITH SERVER and TOURNAMAXX CLASSIC UPDATE FROM SERVER (see descriptions below for details).

SYNC MACHINE SETTINGS WITH SERVER: Touching this button will sync your machine with the Megatouch Live server. This is only necessary if moving the machine to a different location, changing its profile, or swapping its hard drive.

TOURNAMAXX CLASSIC UPDATE FROM SERVER: Touching this button will update all Tournamaxx Classic data (scores, player rankings, etc.) with the server.

There is also a message at the bottom of this menu indicating your software version, if an update to the software is currently downloading to your system, or if the system has downloaded software but the machine needs to be rebooted in order for the update to complete. If the machine needs to be rebooted for updates to be applied, you can do that from this menu by touching the **REBOOT TO APPLY** button. This button will only appear when there are updates to apply.

NOTE: When you first enter the Sync Menu it will take a moment for the system to check for available updates.

Additionally, there is a **VIEW DETAILS** button on this screen that allows you to view the details of the software updates that are currently taking place. This button only appears while software updates are taking place.

Quick Access Panel—Machine Settings



FIGURE 5 – MACHINE SETTINGS OPTIONS SCREEN

From the Machine Settings section of the Quick Access Panel you can adjust the volume of the system, clear the local leaderboards, re-register the machine, view machine diagnostics and view the machine log (which is a list of any system errors). Simply touch your choice of action. Keep in mind that this is the only place where you can set the volume for the system.

NOTE: You can set up your system to auto-clear local leaderboards at set intervals by entering the Control Panel, touching MENU, SETTINGS, and then LEADERBOARD OPTIONS.

NOTE: The machine must be registered in order to communicate with the server. Megatouch HOME comes pre-registered. If a hard drive is swapped or the machine is reverted to factory settings use this option (online registration) to re-register with the server.

Quick Access Panel—Collection and Fees

When you touch the COLLECTION AND FEES button on the Quick Access Panel, you'll be taken to the section's main screen (see Figure 6).

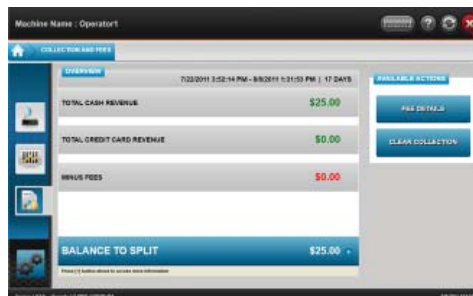


FIGURE 6 – COLLECTION AND FEES MAIN SCREEN

From this screen you can quickly view the total cash revenue, the total credit card revenue (if applicable), the fee deductions, and the balance to split. Touching the + symbol next to BALANCE TO SPLIT will show more information about this balance.

Touch **FEE DETAILS** on the left side of the screen to view the list of fees, their settings, and current collection information regarding these fees.

NOTE: To adjust fee settings, enter the Control Panel and use the Collection and Fees screens located there. Please see the “Control Panel—Collection and Fees” section of this manual for more details.

Touch **CLEAR COLLECTION** to clear all the collection information from the system after you have physically performed a collection.

Control Panel



FIGURE 7 – CONTROL PANEL MAIN SCREEN

Inside the Control Panel you will find all of the options that are available for your machine (except for those that are featured on the Quick Access Panel).

Please see the chart below for an overview of the Control Panel options. See each option's section in this manual for a more detailed look at that option.

Navigating the Control Panel

When you first enter the Control Panel, you'll see the screen shown in Figure 7. Touch any button to enter that section of the Control Panel. When you do so, you'll notice that the blue navigation bar at the top of the screen will expand. You can touch any tab on this bar that ends with an arrow point and you'll be taken directly to that screen.

NOTE: Touching the Home icon at the beginning of the navigation bar will take you out of the Control Panel and back to the Operator Setup Home Page.

Once you're in a particular section of the Control Panel (e.g. Pricing and Costs, Games), touch any of the buttons on the left side of the screen to access those options. The navigation bar at the top of the screen will again expand, and again, you can touch any tab that ends in an arrow to go back to that particular screen.

For a detailed description of any option, touch the green ? next to the option. Touch the **HELP** button at the bottom left of a screen for an overview of the screen and its features.

Touch the **X** at the top corner of the screen at any time to exit Operator Setup.

CONTROL PANEL OPTION	FEATURES
NETWORK	OVERVIEW <ul style="list-style-type: none"> • View Machine ID • View Server Version • View MAC Address
COLLECTION AND FEES	OVERVIEW <ul style="list-style-type: none"> • View Balance to Split • View Number of Days Since Last Collection • View Split Percentage • View Money Capacity SETTINGS <ul style="list-style-type: none"> • Run Cash Settlement Setup <ul style="list-style-type: none"> ○ Show Operator Cut ○ Adjust Location Split Percentage ○ Adjust Fees
GAMES	OVERVIEW <ul style="list-style-type: none"> • View Enabled Advanced Filters SETTINGS <ul style="list-style-type: none"> • Game Setup Wizard <ul style="list-style-type: none"> ○ Erotic Settings ○ Category Setup ○ Gameplay Settings • Gameplay Settings <ul style="list-style-type: none"> ○ Allow Game Continue ○ Enable Auto-Continue ○ Display Card Fanning ○ Enable Extended Play Games • Internet Browser Settings <ul style="list-style-type: none"> ○ Enable Browser ○ Start Page Links ○ Add Links ○ Remove Links

MENU	<p>SETTINGS</p> <ul style="list-style-type: none"> • Player Settings <ul style="list-style-type: none"> ◦ Allow Facebook Avatars to Be Displayed • Leaderboard Options <ul style="list-style-type: none"> ◦ Set Auto-Clear of Local Leaderboards ◦ Display Name in Local Leaderboards
TOURNAMENTS	<p>SETTINGS</p> <ul style="list-style-type: none"> • Tournamaxx Classic Setup <ul style="list-style-type: none"> ◦ Enable Tournamaxx Classic
MACHINE SETTINGS	<p>OVERVIEW</p> <ul style="list-style-type: none"> • View Location Information <p>SETTINGS</p> <ul style="list-style-type: none"> • Set Machine Name • Set Machine Location • Set Advanced Filters <p>ACTIONS</p> <ul style="list-style-type: none"> • Restore Machine Profile Defaults
JUKEBOX	<p>OVERVIEW</p> <ul style="list-style-type: none"> • View Jukebox Information <p>SETTINGS</p> <ul style="list-style-type: none"> • Set Up Jukebox • Test Jukebox Connection • Money-In Options

Control Panel—Pricing and Costs



FIGURE 8 – CONTROL PANEL PRICING AND COSTS OVERVIEW SCREEN

When you first enter the Pricing and Costs screens, you'll see the Overview. This will give a brief description of what can be found in these screens, and it will also show you the credit value, token value, and how many awarded free games are on the system.

Touch **SETTINGS** on the left side of the screen to access the Quick Pricing Wizard or to set credit card options. Touch **ACTIONS** to manage free games.

PRICING AND COSTS	
OVERVIEW	<ul style="list-style-type: none"> View Credit Value View Token Value View Jukebox Value View Number of Awarded Free Games
SETTINGS	<ul style="list-style-type: none"> QUICK PRICING WIZARD <ul style="list-style-type: none"> • Set Credit Value • Set Money-In Capacity • Channels Setup • Change Currency • Money-In Options • Set Individual Tier Costs • Set Individual Game Costs • Set Internet Browser Costs CREDIT CARD OPTIONS <ul style="list-style-type: none"> • Enable/Disable Credit Card Payment • Pulse Hard Meter for Credit Card Purchase
ACTIONS	<ul style="list-style-type: none"> MANAGE FREE GAMES <ul style="list-style-type: none"> • Award/Subtract Free Games • View Maximum Number of Free Games Allowed • View Current Number of Free Games on Machine

Quick Pricing Wizard

The Quick Pricing Wizard will walk you through all the pricing options on the system. To access the Quick Pricing Wizard, touch **PRICING AND COSTS** on the Control Panel, touch **SETTINGS**, and then touch **RUN QUICK PRICING WIZARD**.

Navigating the Quick Pricing Wizard

Changes made in the Quick Pricing Wizard are stored as soon as they are changed on screen. However, you can touch **RESET PAGE** to return the settings to what they were when you entered the screen (before any changes were made). You can also touch **USE DEFAULTS** to revert to the factory default settings for that screen. Touch **NEXT** to continue with the Quick Pricing Wizard, or **BACK** to return to the previous screen.

Touch the arrow icon next to any screen name (such as SET CREDIT VALUE or SET MONEY-IN CAPACITY) to quickly jump to any screen in the Quick Pricing Wizard.

Set Credit Value



FIGURE 9 – SET CREDIT VALUE SCREEN

The first page in the Quick Pricing Wizard is where you can quickly set the base credit value for your machine.

IMPORTANT: Changing the base credit value will affect ALL pricing options on the system, including individual tier cost, individual game cost, and credit card pricing. This should be set prior to making any other pricing changes.

Touch what you want the base credit value to be, and then touch **NEXT** to continue with the Quick Pricing Wizard.

Set Money-In Capacity



FIGURE 10 – SET MONEY-IN CAPACITY SCREEN

Use the drop-down menus to change the size settings for your coin box and/or your bill acceptor (if needed). These should be set according to your hardware.

NOTE: Larger coin boxes are only available on systems without bill acceptors.

IMPORTANT: Having the wrong settings on this page can cause faulty “Full Capacity” notices on your system.

When you are finished with this page, touch **NEXT** to continue with the Quick Pricing Wizard.

Channels Setup

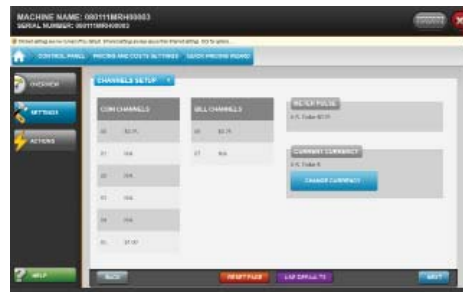


FIGURE 11 – CHANNELS SETUP SCREEN

The channels are pre-set by your profile (which is based on your coin mech, bill acceptor, and country). These amounts can be viewed on this page, along with what type of currency the machine is enabled to accept (e.g. U.S. dollars, Canadian dollars).

The meter pulse, which is the highest common divisor of all the monetary values of the channels, is independent of the credits and only tracks the smallest unit of currency accepted by the system. You can use this number to determine the amount of money earned on a game by multiplying the meter pulse by the reading on the hard meter.

When you are finished with this page, touch **NEXT** to continue with the Quick Pricing Wizard.

Money-In Options



FIGURE 12 – MONEY-IN OPTIONS SCREEN

This screen is used to set how many credits are given for each purchase price. This includes cash, credit card, and jukebox purchases (where applicable). The values on this screen will automatically be populated based on what is set on the Set Credit Value screen of the Quick Pricing Wizard (please see the “Set Credit Value” section of this manual for details).

Touch the pencil icon to edit the CASH-IN amount. Use the plus and minus buttons to adjust the number of credits that will be given for each of the prices shown. Touch a circle under DISPLAY AS DEFAULT next to any value to have it displayed as the default price that players will see on screen.

If you have credit card purchases enabled on your system, touch **CREDIT** to set credit card purchase values. Credit card purchases must be a minimum of 5 dollars and a maximum of 15 dollars, though they can be set for any three purchase prices in between those amounts.

If you have a jukebox connected to your Megatouch Home, touch **AMI JUKEBOX** to adjust the purchase values or **TOUCHTUNES JUKEBOX** to view the purchase values.

When you are finished with this page, touch **NEXT** to continue with the Quick Pricing Wizard.

Set Individual Tier Costs



FIGURE 13 – SET INDIVIDUAL TIER COSTS SCREEN

Pricing tiers give you the ability to set the pricing for an entire group of games in one easy step (instead of adjusting them individually). Use the plus and minus buttons to change the credit cost and the cost to continue for the top three pricing tiers, which are the tiers common to every Megatouch Live system. These tiers are:

- **Standard:** Typical games that average gameplay of three minutes or less.
- **Premium:** Games that have an average gameplay over three minutes.
- **Classic:** Classic Megatouch Games that have an average gameplay of three minutes or less
- **Head-to-Head:** Head-to-head two-player games.

NOTE: The Head-to-Head price shown on this screen is the per player cost, so the actual price of the game will double, as there must be two players to play these games.

There are also two custom pricing tiers that are empty by default, but they can be configured to set your own unique pricing tiers (as needed). Set the pricing for whatever custom tier you want to create, then assign games to them on the Set Individual Game Costs screen.

For details on how to assign games to a particular pricing tier, please see the next section of this manual: "Set Individual Game Costs".

When you are finished with this page, touch **NEXT** to continue with the Quick Pricing Wizard.

Set Individual Game Costs

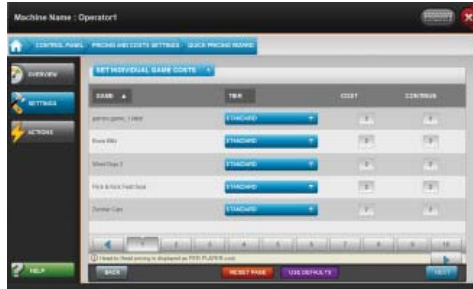


FIGURE 14 – SET INDIVIDUAL GAME COSTS SCREEN

On this screen you can view all the games on the system and place them in whatever pricing tier you wish. If you change the pricing tier for any game, the values under **COST** and **CONTINUE** will change to reflect that tier's pricing (as set on the Set Individual Tier Costs screen). Simply use the drop-down menu next to a game to change its pricing tier.

To manually set an individual game's pricing, set its tier to **NONE**, and then use the plus and minus buttons to adjust the costs.

Game titles can be sorted alphabetically in ascending or descending fashion by touching the arrow next to the **GAME** heading. You can scroll through more games by touching either a page number or one of the arrow buttons near the bottom of the screen.

When you are finished with this page, touch **NEXT** to exit the Quick Pricing Wizard and return to the Pricing and Costs Settings screen.

Set Internet Browser Costs

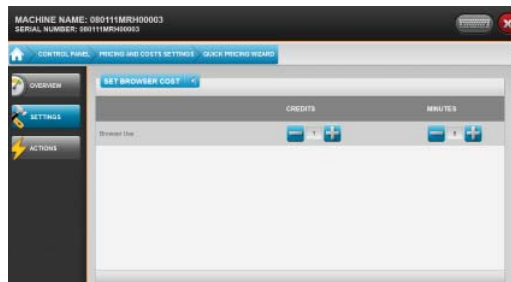


FIGURE 15 - SET INTERNET BROWSER COSTS

Manually set the number of credits required for a specific amount of Internet browsing time.

Credit Card Options

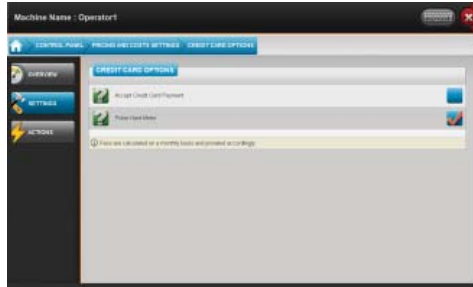


FIGURE 16 – CREDIT CARD OPTIONS SCREEN

To access Credit Card Options, touch **PRICING AND COSTS** on the Control Panel, touch **SETTINGS** on the left side of the screen, and then touch **CREDIT CARD OPTIONS**.

A check in the box next to “Accept Credit Card Payment” enables credit card payment on the system. To stop your machine from accepting credit card payments, touch the box and ensure that there is no check mark next to this option.

A check next to “Pulse Hard Meter” indicates that a credit card purchase will pulse the machine’s hard meter.

Manage Free Games

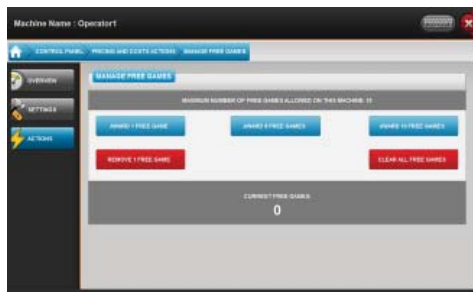


FIGURE 17 – MANAGE FREE GAMES SCREEN

To manage free games on the system, touch **PRICING AND COSTS** on the Control Panel, touch **ACTIONS** on the left side of the screen, and then touch **MANAGE FREE GAMES**.

On the Manage Free Games screen, you can see the maximum number of free games allowed on the machine, and how many free games are currently on the system. Touch a button on the page to perform the indicated action.

Control Panel—Collection and Fees



FIGURE 18 – CONTROL PANEL COLLECTION AND FEES OVERVIEW SCREEN

IMPORTANT: Collection information cannot be cleared from the CONTROL PANEL—Collection and Fees Screens. To clear and complete a collection, access the Collection and Fees section of the QUICK ACCESS PANEL. Please see the “Quick Access Panel—Collection and Fees” section earlier in this manual for details.

When you first enter the Collection and Fees screens, you’ll see the Overview screen. This will give a brief description of what can be found in these screens, and it will also show you the balance to split, the number of days since last collection, the split percentage, and how full both the bill acceptor and coin box are.

Touch **SETTINGS** on the left side of the screen to run Cash Settlement Setup.

COLLECTION AND FEES	
OVERVIEW	View Balance to Split View Number of Days Since Last Collection View Split Percentage View Percentage of Bill Acceptor Filled View Percentage of Coin Box Filled
SETTINGS	RUN CASH SETTLEMENT SETUP <ul style="list-style-type: none"> • Enable/Disable Show Operator Cut to Location • Set Location Split Percentage • View/Adjust Revenue Share Percentage • View Credit Card Fee Percentage • View/Adjust Tax Percentage • View/Set Optional Fees • View/Adjust Tournamaxx Classic Fees

Cash Settlement Setup

In Cash Settlement Setup you can turn on/off the location's ability to see the operator's cut of the earnings. You can also set the location split percentage, view the revenue share and credit card fee percentages, and adjust the tax percentage and other fees.

NOTE: This is the only place where you can actually adjust fees on the system. You can view all fees through the Quick Access Panel—Collection and Fees screens. Please see that section of the manual for more details.

Navigating Cash Settlement Setup

Changes made in Cash Settlement Setup are stored as soon as they are changed on screen. However, you can touch **RESET PAGE** to return the settings to what they were when you entered the screen (before any changes were made). You can also touch **USE DEFAULTS** to revert to the factory default settings for that screen. Touch **NEXT** to continue with Cash Settlement Setup, or **BACK** to return to the previous screen.

Using Cash Settlement Setup



FIGURE 19 – CASH SETTLEMENT LOCATION SCREEN

On the LOCATION screen: A check in the box next to “Show Operator Cut” will allow the location to see the operator's cut of the earnings on the Collection and Fees screen when you touch **Balance to Split**. Use the plus and minus buttons to adjust the Location Split Percentage.

On the FEES screen: Touch the pencil icon to change any adjustable fee.



FIGURE 20 – CASH SETTLEMENT FEES SCREEN

NOTE: Megatouch recommends that you set Revenue Share according to your contract. Adjusting Revenue Share on this screen will in no way affect how you are billed.

Control Panel—Games

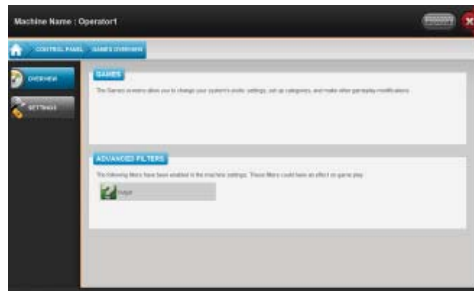


FIGURE 21 – CONTROL PANEL GAMES OVERVIEW SCREEN

When you first enter the Games screens, you'll see the Overview screen. This will give a brief description of what can be found in these screens, and it will also show you what (if any) advanced filters are enabled on the machine.

Touch **SETTINGS** on the left side of the screen to access the Game Setup Wizard. Touching **GAMEPLAY SETTINGS** will take you directly to the Gameplay Settings screen in the Game Setup Wizard; this button is simply a shortcut.

GAMES	
OVERVIEW	View Enabled Advanced Filters
SETTINGS	GAME SETUP WIZARD <ul style="list-style-type: none"> • Enable Erotic • Change Erotic Settings • Enable Erotic Based on Time of Day • Category Setup • Enable Game Continue • Enable Auto-Continue • Enable Card Fanning Before Games • Enable Extended Play • Enable/Setup Internet Browser GAMEPLAY SETTINGS <ul style="list-style-type: none"> • This button is a shortcut to the Gameplay Settings screen of the Game Setup Wizard

Game Setup Wizard

The Game Setup Wizard will walk you through all the game options on the system. This includes the enabling and configuring of erotic content on the system, setting up the categories that the players will see on screen, and fine-tuning the gameplay settings.

Navigating the Game Setup Wizard

Changes made in the Game Setup Wizard are stored as soon as they are changed on screen. However, you can touch **RESET PAGE** to return the settings to what they were when you entered the screen (before any changes were made). You can also touch **USE DEFAULTS** to revert to the factory default settings for that screen. Touch **NEXT** to continue with Game Setup, or **BACK** to return to the previous screen.

NOTE: Touching GAMEPLAY SETTINGS on the SETTINGS screen will take you to that page in the Game Setup Wizard, so navigation of this page will behave just as it does in the Wizard.

Erotic Settings



FIGURE 22 – EROTIC SETTINGS SCREEN

A check in the box next to “Enable Erotic” indicates that erotic content (including erotic games and idle screens) will appear on the system. After enabling erotic, select a rating level by using the “LEVEL” drop-down. Touch a block of time to change the erotic settings for that time of the day, or use the drop-down menus to quickly change large blocks of time.

Please see the screen’s help text for detailed information about the erotic ratings.

When you are finished with this screen, touch **NEXT** to continue with the Game Setup Wizard.

Category Setup

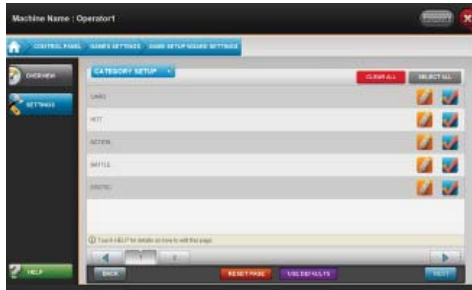


FIGURE 23 – CATEGORY SETUP SCREEN

On this screen you can select which categories the player will be able to choose games from. A check in the box next to a category's name indicates that it is active and players will see it on screen. You can also edit which games appear in a particular category. Do so by touching the pencil icon next to a category's name.

Editing a Category



FIGURE 24 – CATEGORY EDIT SCREEN

After touching a pencil icon next to a category on the Category Setup screen, you'll be able to edit the games in that particular category and the order that these games appear on screen. The name of the category you're editing (CARDS, PUZZLES, etc.) will appear listed above the heading AVAILABLE GAMES.

NOTE: Touching the arrow next to the category name will allow you to jump quickly between categories.

Touch the arrow next to the name of any game to add it to the category (the name of the game will move from the left side of the screen to the right side). Touch the X next to any game to remove it from that category. Both of these actions can also be done by touching a game and dragging it where you want.

Touch the arrows at the bottom of the AVAILABLE GAMES window to cycle through games that are not assigned to the category you're editing. Touch the arrows at the bottom of the PAGE window to cycle through games currently assigned to the category. Note: As of Version 3 software, ten (10) games appear on a single page. The games listed in the "Page 1" column will be the first five to appear. The games listed on "Page

2” will be the 2nd five to appear. You can also drag and drop games between pages so that the games are laid out on screen exactly as you want them to be.

Touch **AUTO-FILL ALL GAMES** to place every available game into a category. Touch **CLEAR ALL** to remove all games from a category.

Touching NEXT or BACK on this screen takes you to the Category Setup screen.

Gameplay Settings



FIGURE 25 – GAMEPLAY SETTINGS SCREEN

On this screen you can enable/disable any of the gameplay settings listed. Touch the green help ? next to any option to read about that option. A check in a box next to an option means that it is enabled on the system. Touching the pencil icon next to any option allows you to enable it for certain games. A check next to any game name (after touching the pencil icon) indicates that the option is enabled for that game.

NOTE: Touching the GAMEPLAY SETTINGS button on the GAMES > SETTINGS screen takes you to this screen. The button on the SETTINGS screen is merely a shortcut here.

Extended Play

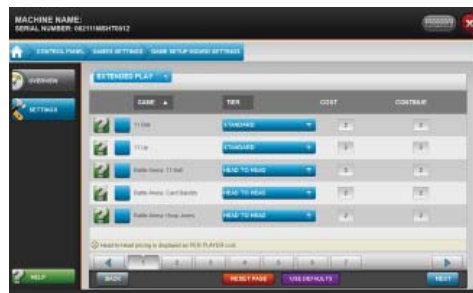


FIGURE 26 – EXTENDED PLAY SCREEN

On the Gameplay Settings screen, you can enable Extended Play games. This feature extends the length of gameplay, though only certain games have Extended Play available. Touch the pencil icon next to “EXTENDED PLAY” on the Gameplay Settings screen to go to the Extended Play screen. On this screen, a check in the box next to any game indicates that it is in Extended Play mode. Touching the green ? next to any game will tell you what this means for each individual game. You can also change the pricing for these games on this screen by assigning them to a pricing tier or manually adjusting the price.

Browser Settings

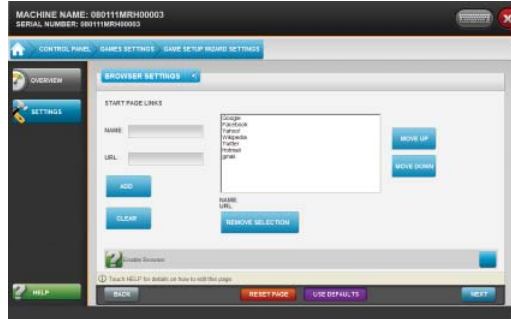


FIGURE 27 - INTERNET BROWSER SETTINGS

Select the Enable Internet Option to allow players to utilize an Internet Browser from the Welcome Menu. (See Pricing & Costs on Pg 20 for further details on how to set Browser pricing.) Megatouch has provided default links to popular websites to appear on the home page. Additional sites can be added by entering the website name and the URL. NOTE: URL MUST START WITH “http://” or “https://”. Websites can be moved up/down or deleted by highlighting the website and selecting the corresponding action.

Control Panel—Menu

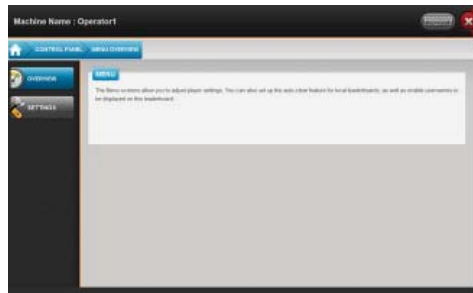


FIGURE 28 – CONTROL PANEL MENU OVERVIEW SCREEN

When you first enter the Menu screens, you’ll see the Overview screen. This will give a brief description of what can be found in these screens.

Touch **SETTINGS** on the left side of the screen to access Player and Leaderboard settings.

MENU	
SETTINGS	PLAYER SETTINGS <ul style="list-style-type: none"> • Allow Facebook Avatars to Be Displayed LEADERBOARD OPTIONS <ul style="list-style-type: none"> • Enable and Set Auto-Clear of Local Leaderboards • Enable/Disable Displaying Usernames in Local Leaderboards

Player Settings



FIGURE 29 – PLAYER SETTINGS SCREEN

Touch the green ? next to any option to read about that option. A check in the box next to an option means that it is enabled on the system. Touch **RESET PAGE** to return the settings to what they were when you entered the screen (before any changes were made). You can also touch **USE DEFAULTS** to revert back to the factory default settings for this screen.

Leaderboard Options

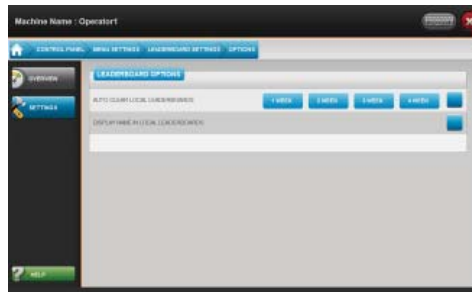


FIGURE 30 – LEADERBOARD OPTIONS SCREEN

On this screen you can choose to have the system automatically clear the local leaderboards after a set amount of time. A check in the box next to “AUTO-CLEAR LOCAL LEADERBOARDS” shows that this option is enabled. If this is enabled, please select how often you want the leaderboards to auto-clear by touching one of the on-screen options.

A check in the box next to “DISPLAY NAME IN LOCAL LEADERBOARDS” will do just that—display names on the local leaderboards. If this box is not checked, names will not appear on local leaderboards.

Control Panel—Tournaments

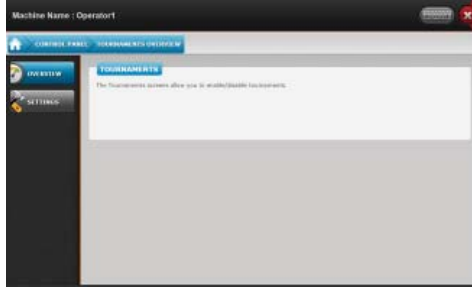


FIGURE 31 – CONTROL PANEL TOURNAMENTS OVERVIEW SCREEN

When you first enter the Tournaments screens, you'll see the Overview screen. This will give a brief description of what can be found in these screens.

Touch **SETTINGS** on the left side of the screen to enable or disable tournaments.

TOURNAMENTS	
SETTINGS	TOURNAMAXX CLASSIC SETUP • Enable Tournamaxx Classic

Tournamaxx Classic Setup



FIGURE 32 – TOURNAMAXX CLASSIC SETUP SCREEN

Touch the green ? next to any option to read about that option. A check in the box next to an option means that it is enabled on the system. Touch **RESET PAGE** to return the settings to what they were when you entered the screen (before any changes were made). You can also touch **USE DEFAULTS** to revert back to the factory default settings for this screen.

For more information visit www.megatouch.com.

Control Panel—Machine Settings

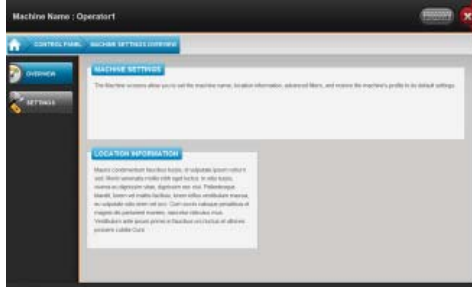


FIGURE 33 – CONTROL PANEL MACHINE SETTINGS OVERVIEW SCREEN

When you first enter the Machine Settings screens, you'll see the Overview screen. This will give a brief description of what can be found in these screens, and lists the location information associated with the machine.

Touch **SETTINGS** on the left side of the screen to set the machine name, set the machine location, set advanced filters, or restore the machine to its default settings

MACHINE SETTINGS	
OVERVIEW	VIEW LOCATION INFORMATION
SETTINGS	SET MACHINE NAME SET MACHINE LOCATION SET ADVANCED FILTERS
ACTIONS	RESTORE MACHINE PROFILE DEFAULTS

Set Machine Name

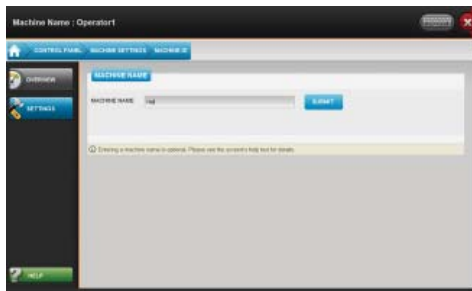


FIGURE 34 – MACHINE NAME SCREEN

During initial setup of your system, you were given the opportunity to set a machine name. Megatouch will use the game's serial number for identification purposes, so this would merely be a secondary name used solely by you (if you have your own way of tracking machines).

Touch **SET MACHINE NAME** from the SETTINGS screen to either change the name that's associated with the system, or to enter a new name if one hasn't been set before.

NOTE: Be sure to touch **SUBMIT** if you enter a new machine name.

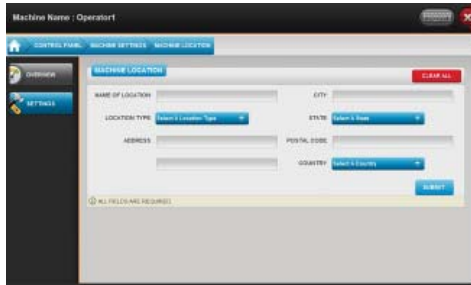


FIGURE 35 – SET MACHINE LOCATION SCREEN

Set Machine Location

Touch **SET MACHINE LOCATION** to change the location information associated with the machine. After touching this button, you can either use the drop-down menu to choose from any of your existing locations, or you can touch **CREATE NEW LOCATION** to enter information for a new location. This requires an internet connection and depending upon your connection speed, may take a moment to load.

NOTE: Be sure to touch **SUBMIT** if you want to enter new location information.



FIGURE 36 – SET ADVANCED FILTERS SCREEN

Set Advanced Filters

A check in the box next to a filter indicates that the filter is enabled. Touch the green ? next to a filter to read its description. Touch **RESET PAGE** to return the settings to what they were when you entered the screen (before any changes were made). You can also touch **USE DEFAULTS** to revert back to the factory default settings for this screen.

Restore Machine to Profile Defaults

Your machine profile is essentially a list of settings for the system. The profile was set during the initial setup of the system. Touch **RESTORE MACHINE TO PROFILE DEFAULTS** to clear all edited settings from the machine and revert ALL settings to the profile's configuration.

IMPORTANT: This will clear ALL of the settings you changed on the entire system. Proceed ONLY if you wish to clear ALL of the changes you made.

Control Panel—Jukebox



FIGURE 37 – CONTROL PANEL JUKEBOX OVERVIEW SCREEN

When you first enter the Jukebox screens, you'll see the Overview screen. This will give a brief description of what can be found in these screens, and lists the jukebox information if one is connected to the Megatouch Home.

Touch **SETTINGS** on the left side of the screen to set up a jukebox to connect to the Megatouch Home, to test the game's connection with the jukebox, or to jump to the jukebox money-in options.

JUKEBOX	
OVERVIEW	VIEW JUKEBOX INFORMATION
SETTINGS	SET UP JUKEBOX TEST JUKEBOX CONNECTION MONEY-IN OPTIONS

Set Up Jukebox

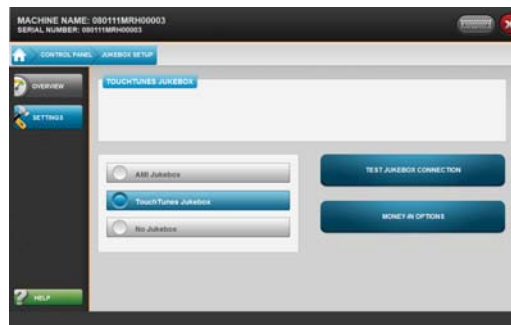


FIGURE 38 – SET UP JUKEBOX SCREEN

AMI JUKEBOX NOTE: If you are connecting your Megatouch Home to an AMI jukebox, you may need to enter your AMI ID and password which may differ from your Megatouch account information. If your jukebox is not registered to a location, you can set this information through your Operator Web Site (www.amitentertainment.net).

TOUCHTUNES NOTE: If you are connecting your Megatouch Home to a TouchTunes jukebox, the game and the jukebox need to be on the same router. Additionally, the TouchTunes jukebox needs to be up and running before you enter the Jukebox screens or it will not be recognized by the Megatouch Home.

To connect a jukebox to your Megatouch Home, simply touch the **AMI Jukebox** or **TouchTunes Jukebox** buttons. The game will automatically attempt to connect to the selected jukebox. If you are having connection issues, please see the notes above.

IMPORTANT: After establishing a connection with an AMI jukebox, it is highly recommended that you go to the *Money-In Options* screen to confirm that the Megatouch Home's jukebox pricing matches the pricing configured on the jukebox.

If you wish to disable your game's connection to the jukebox, touch the button next to **No Jukebox**.

Touch **TEST JUKEBOX CONNECTION** to check your game's connection to a jukebox.

Touch **MONEY-IN OPTIONS** to jump to the Money-In Options screen under Pricing and Costs. From here you can adjust the pricing for selecting a song on an AMI jukebox from the Megatouch Home, or you can view TouchTunes pricing.

Megatouch Live Player Features

NOTE: Megatouch Live Player features require a broadband internet connection.

In addition to the great new games, enhanced gameplay, and cutting-edge graphics, Megatouch Live systems offer players whole new ways to experience their favorite casual gaming system. What follows in this section is a brief overview of these features so that you, the operator, will know all the ins and outs of the player experience.

Getting a Megatouch Live Account

Players can get a Megatouch Live account for free right at the machine. All they need to do is follow the simple on-screen instructions. After they have their account set up, they can access the following features:

Tokens

Credits purchased by the player can be traded for tokens. These tokens are used to get in-game Power-Ups.

Power-Ups

Power-Ups are special gameplay features that the player can unlock by trading in their tokens or credits. There are three different Power-Ups available for each game, though players can only use one Power-Up per game.

Challenges and Challenge Score

Challenges are objectives that a player can achieve while playing a single game or over the course of multiple games. When players fulfill these challenges, they will have points added to their Challenge Score. The more difficult the challenge is to achieve, the more points the player will be awarded. They can then compare their Challenge Score with other Megatouch Live players all over the country.

Global Leaderboards

In addition to a global Megatouch Live Leaderboards, players with a Megatouch Live account can view global leaderboards for the highest game. These leaderboards also have different listings for Standard and Extended Play, as well as monthly and all-time bests.

Linking with Facebook

Megatouch Live players will have the ability to link their account with their Facebook account. By doing so, players can post things like challenges completed, high scores, and Battle Arena wins directly from the game to their Facebook page. Players can also add comments to their Megatouch Live Facebook posts (200 character limit), or “check in” from any Megatouch location and utilize their Facebook profile picture as their Avatar.

System Reset Menu

The System Reset Menu can be accessed only during the machine's boot up. When the screen appears during boot up with a note at the bottom reading "SEARCHING FOR OPERATOR INPUT", press and hold the red operator setup button inside the rear of the cabinet. (See Figure 40 for button location.) Once the SYSTEM RESET MENU screen appears, you can release the button.



FIGURE 39 - SYSTEM RESET MENU

The System Reset Menu contains the following options:

CLEAR LOCAL SETTINGS (Preserve Network Information)

Clearing the local settings will permanently delete all connection and machine logs, volume settings, local leaderboards and books data; however all operator-adjustable settings will be resent to the machine from the server. This option will maintain your network information settings

CLEAR LOCAL SETTINGS

Clearing the local settings will permanently delete all network connection information, connection and machine logs, volume settings, local leaderboards and books data; however all operator-adjustable settings will be resent to the machine from the server.

NOTE: It is recommended that you sync the machine with the server before clearing local settings.

CLEAR ALL SETTINGS (Preserve Network Information)

This will revert the game to factory defaults and will **PERMANENTLY** delete **ALL** settings and data while maintaining your network information.

CLEAR ALL SETTINGS

This will revert the game to factory defaults and will **PERMANENTLY** delete **ALL** settings and data.

RE-REGISTER MACHINE

This will allow you to re-register your machine or change your machine's registration information.

SYNC MACHINE WITH SERVER

This will sync your machine with the Megatouch Live server. This is only necessary if moving the machine to a different location, changing its profile, or swapping its hard drive.

TOURNAMAXX CLASSIC UPDATE FROM SERVER

This will update all Tournamaxx Classic data (scores, player rankings, etc.) with the server.

FACTORY SOFTWARE REINSTALL

This will revert the game to factory defaults by reinstalling the version of software that the shipped on the hard drive from the factory. This will **PERMANENTLY** delete **ALL** settings, data and software updates. Any later versions of software will need to be downloaded after a successful Factory Reinstall

NOTE: This option is only necessary if the software is corrupted.

IMPORTANT: Performing a factory software reinstall could take up to 30 minutes to complete.

Swapping Hard Drives

It is recommended that you perform a collection on your Megatouch Home systems before swapping hard drives. For details on performing a collection, please see the “Quick Access Panel—Collection and Fees” section of this manual.

It is also recommended that you sync your system with the server so that no information is lost. To sync your system, go to the Operator Home Page and touch the sync button near the top-right part of the screen (see Figure 36); this will open the Sync Menu. On the Sync Menu, touch **SYNC MACHINE SETTINGS WITH SERVER** and touch the button to sync the machine. If you're running Tournamaxx Classic tournaments on the machine, you'll also need to touch **TOURNAMAXX CLASSIC UPDATE FROM SERVER** and go through those steps as well.

When a new hard drive is detected on an Megatouch Home, the system will recognize the new hard drive during boot up and display the SYSTEM RESET MENU. Touch **CLEAR LOCAL SETTINGS** and then touch **RESET** to begin the process.

After this is complete, you'll have to re-perform the initial setup for the machine. Follow the steps described in the “Initial Setup” section of this manual.

General Care and Maintenance

IMPORTANT: *This game MUST only be serviced by qualified service personnel.*

CAUTION: THERE ARE HIGH-VOLTAGE PARTS IN THIS GAME. BE CAREFUL WHEN SERVICING THE INSIDE OF THE GAME. THE GAME SHOULD ALWAYS BE UNPLUGGED BEFORE SERVICING.

General Circuit Board Handling Information

Before handling any boards, observe the following procedures:

Prevent Electro-Static Discharge by:

1. Storing the boards in the anti-static bags in which they are shipped.
2. Removing any static charge from your body before handling the boards.
3. Using a ground strap when handling the boards.

When plugging in connectors to the board, make sure the connector is inserted straight onto the header and that the connector covers all header pins. Most connectors are keyed to ensure proper insertion.

Do not connect any peripheral device to the board if the power is still connected to the peripheral, or if power is already applied to the board.

CAUTION: BE EXTREMELY CAREFUL WHEN REPLACING THE LITHIUM BATTERY ON THE MOTHERBOARD. THERE IS A DANGER OF EXPLOSION IF THE BATTERY ON THE MOTHERBOARD IS INCORRECTLY REPLACED. ONLY REPLACE THE BATTERY WITH THE SAME TYPE RECOMMENDED BY THE MANUFACTURER. DISPOSE OF USED BATTERIES ACCORDING TO THE MANUFACTURER'S INSTRUCTIONS.

Cleaning the Cabinet

The cabinet should be cleaned with a damp cloth and mild detergent. Always apply the cleaner to the cloth and not directly on the game. Liquids could enter the cabinet and damage electronics inside.

Cleaning the Touchscreen Monitor

The touchscreen glass should be cleaned with a damp cloth and isopropyl alcohol or a *non-ammonia* cleanser.

CAUTION: DO NOT USE ANY ABRASIVE SOLVENTS, ACID OR VINEGAR-BASED CLEANSERS ON THE MONITOR OR DECALS. OVER TIME SUCH CLEANSERS COULD HARM THE TOUCHSCREEN AND ERASE THE DECALS. BE CAREFUL NOT TO USE COMMERCIAL CLEANERS CONTAINING ANY OF THESE SUBSTANCES.

Cleaning the Fans and Vents

The fans and vents should be cleaned of any dust and grime on a regular basis to ensure proper ventilation of the game.

To ensure proper operation of the game, it is important that all fans are operating correctly and that the airflow is unobstructed. Make sure nothing is placed inside the cabinet or next to the fan vents that would inhibit the flow of air. Also, if any fans are not operating,

it is important that they be replaced.

Watchdog Timer

This game has been equipped with a feature that allows it to automatically reboot if it encounters a problem. The watchdog timer will reboot the machine within 5 minutes after a failure, allowing the game to automatically reset itself if a problem arises without needing a technician present.

Megatouch Home Countertop Diagrams

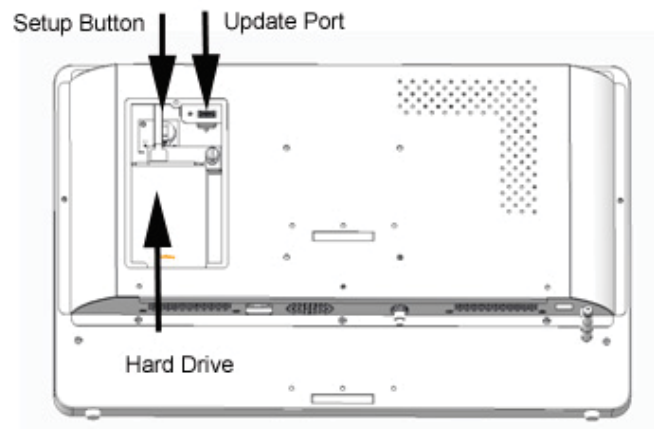


FIGURE 40 – REAR VIEW OF THE MEGATOUCH HOME WITH ACCESS DOOR REMOVED

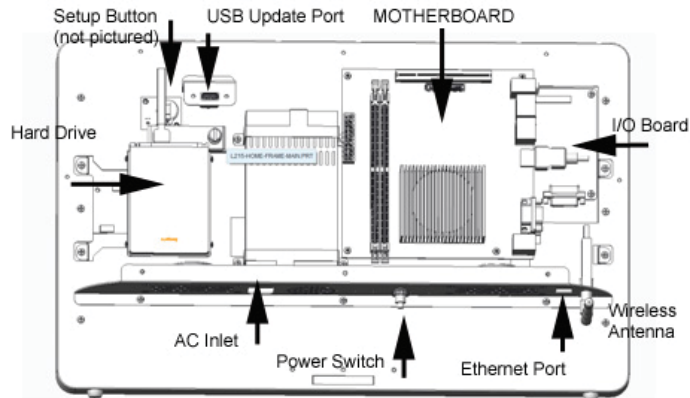


FIGURE 41 – REAR VIEW OF THE MEGATOUCH HOME WITH REAR COVER REMOVED

REPLACEMENT PARTS

For a complete list of replacement parts go to
www.megatouch.com
Support > Megatouch Support Center > Parts Information.

NOTE: The parts in your game may vary. When calling for replacement parts, please have your serial number available to ensure the accuracy of your order.

For additional assistance, after contacting your distributor, contact:

Product Support and Services

U.S. and Canada call toll-free:

1-800-445-9353

Outside the U.S. and Canada call:

(215) 826-1400

FAX: (215) 826-1401

You can also visit our Web site

www.megatouch.com

Video Machine Limited Warranty

Megatouch, LLC. warrants this video machine to be free from defects in material and workmanship for a period of three years from the date of purchase. The warranty covers all electrical components (except fuses and light bulbs).

Failure due to misuse, vandalism, excessive or intentional abuse, operation outside specified conditions (including, but not limited to, improper electrical power source), fire, water damage, acts of God, acts of war and civil unrest are specifically excluded.

Megatouch products are carefully inspected and thoroughly tested prior to packing and shipment. Any damage discovered upon receipt of goods, whether obvious or concealed, must be reported immediately to the delivering carrier and claims made directly to them. Megatouch assumes no responsibility for damages once the product has left its facilities and any disputes regarding transportation damage must be resolved with the shipping company(s).

Megatouch will repair or replace, at its option, any component, part or assembly that fails under warranty, provided that the failed item is returned, shipping charges prepaid, to Megatouch's repair facility, and Megatouch is notified of the failure within the warranty period. Megatouch reserves the right to request the serial numbers of the item and/or game which has failed, and copies of sales invoices, bills of lading or other documents as required to determine the validity of the warranty coverage. Megatouch will return or replace warranty items, as specified above, shipping charges prepaid, by ground transportation.

Megatouch's obligation shall be limited to repair or replacement as stated above, and shall specifically exclude any liability for consequential damages or loss of earnings.

Megatouch may, at its discretion, provide replacement parts under warranty prior to receiving defective items, without incurring any ongoing obligation to extend such accommodations.

The above terms and conditions constitute the sole obligation, written or implied, of Megatouch under its warranty coverage.

Megatouch, LLC. Software License Agreement

Megatouch, LLC. ("Licensor") is willing to license the enclosed software to you only if you accept all of the terms in this license agreement ("Agreement").

Ownership of the Software

1. The enclosed Megatouch® product, which may include but is not limited to the Megatouch software program ("Software") and the accompanying written materials, are owned by Licensor and are protected by United States copyright laws, patent laws and other intellectual property laws, by laws of other nations, and by international treaties.

Restrictions on Use and Transfer

2. If this Software package contains multiple media types (such as CDs, flash cards, hard drives, etc), then you may use only the type of media appropriate for your Machine. You may not use the other media types on another Machine, or transfer, or assign them to another user except as part of the permanent transfer of the Software and all written materials (as provided for below in paragraph 4).
3. You may make one copy of the software for backup purposes only. You may not copy or make backup copies of any software security key or software security device under any circumstances.
4. You may permanently transfer the right to use the Software and accompanying written materials (including the most recent update and all prior versions) if you retain no copies and the transferee agrees in writing to be bound by the terms of this Agreement. Such a transfer of this license to another party immediately terminates your license. You may not otherwise transfer or assign the right to use the Software, except as stated in this paragraph.
5. You may not operate or allow the operation of the Software at locations where the operation of such Software does not comply with all local, state, and other governmental body laws and regulations. You agree to not use or permit the use of the Software in violation of any U.S. Federal, state, or local laws or regulations or any foreign law or regulation, including laws regarding gaming, gambling or intellectual property rights in or concerning the Software.
6. You may not modify, adapt, translate, reverse engineer, decompile, disassemble the Software or create derivative works from the Software or any component thereof; nor may you remove, modify or hide or otherwise make unreadable or non-viewable any notice, legend, advice, watermark or other designation contained on the Software, component thereof, or output therefrom.
7. You agree that the Software and the authorship, systems, ideas, inventions methods of operation, documentation and other information contained therein, and all versions, modifications and adaptations thereto are proprietary intellectual properties of Licensor and are protected by civil and criminal law, and by copyright, trade secret, trademark and the patent laws of the United States and other countries.

Limited Warranty

8. Licensor warrants, solely for your benefit, that the Software will function in material conformity, with its accompanying documentation for a period outlined in Licensor's standard product warranty period after your receipt of the Software.

Licensor's Obligations Under Warranty

9. Licensor's sole obligation under the aforesaid warranty shall be to utilize commercially reasonable efforts to correct or modify such portion of the Software as to make it materially conform with the applicable documentation.

Grant Of License

10. Licensor grants to you a limited, non-exclusive license to distribute and/or use one copy of the Software on a single Megatouch ("Machine") accompanied by a single licensor factory authorized security key. Licensor reserves the right to update versions of the software and the content to the Machine as deemed appropriate by the Licensor. You are entrusted to maintain and protect your single licensor factory authorized security key, password, or other identification from being utilized by any third party, and you agree to be responsible for any use of the Software provided herein by a third party utilizing your identification. Licensor maintains the right to immediately terminate your License for reasons related to misuse or other non-conformity with the rules expressed herein. While Licensor does not routinely inspect Machines, Licensor also reserves the right to inspect or audit the Software from time to time in Licensor's sole discretion. To the extent that Licensor's access to the Software requires that Licensor also gain access to a Machine in which the Software is installed, you agree to promptly provide Licensor, when requested, with permission and aid in Licensor gaining access to the Machine.

Disclaimers

11. EXCEPT AS PROVIDED IN THE SECTION ENTITLED "LIMITED WARRANTY", LICENSOR MAKES NO OTHER PROMISES, REPRESENTATIONS OR WARRANTIES, WHETHER EXPRESSED OR IMPLIED, REGARDING OR RELATING TO THE SOFTWARE OR CONTENT THEREIN OR TO ANY OTHER MATERIAL FURNISHED OR PROVIDED TO YOU PURSUANT TO THIS AGREEMENT OR OTHERWISE AND LICENSOR SPECIFICALLY DISCLAIMS ALL IMPLIED WARRANTIES OF MERCHANTABILITY AND FITNESS FOR A PARTICULAR PURPOSE WITH RESPECT TO SAID MATERIALS OR THE USE THEREOF. TO THE MAXIMUM EXTENT ALLOWABLE BY LAW THE UNIFORM COMMERCIAL CODE OR OTHER UNIFORM LAWS SHALL NOT APPLY TO THIS AGREEMENT.

Limitation on Liability

12. IN NO EVENT SHALL LICENSOR BE LIABLE UNDER ANY CLAIM, DEMAND OR ACTION ARISING OUT OF OR RELATING TO THE SOFTWARE, ITS USE, INSTALLATION OR LICENSOR'S PERFORMANCE OR LACK THEREOF UNDER THIS AGREEMENT FOR ANY SPECIAL, INDIRECT, INCIDENTAL, EXEMPLARY OR CONSEQUENTIAL DAMAGES, WHETHER OR NOT LICENSOR HAS BEEN ADVISED OF THE POSSIBILITY OF SUCH CLAIM, DEMAND OR ACTION. IN ADDITION, WITHOUT LIMITING THE FOREGOING, IN ALL EVENTS THE REMEDIES AVAILABLE TO YOU SHALL BE LIMITED TO THE AMOUNT PAID BY YOU TO LICENSOR FOR THE SOFTWARE.
13. IN NO EVENT WILL LICENSOR BE LIABLE TO YOU FOR DAMAGES, INCLUDING ANY LOSS OF PROFITS, LOST SAVINGS, OR OTHER INCIDENTAL OR CONSEQUENTIAL DAMAGES ARISING OUT OF YOUR USE, MISUSE, BREACH OF THIS AGREEMENT OR INABILITY TO USE THE SOFTWARE.

General

14. The validity and construction of this Agreement and of the rights and obligations herein shall be determined and governed by the laws of the State of New York. By accepting the terms of this Agreement, you acknowledge and accept that the courts of New York, New York shall have exclusive jurisdiction and venue regarding any disputes arising with regard to this Agreement or arising out of activity or misuse of the Software.
15. Megatouch, LLC. in its sole discretion, may assign this agreement or any of its rights and obligations hereunder.
16. If you have any questions concerning this Agreement or wish to contact Licensor for any reason, please write: Megatouch, LLC., 155 Rittenhouse Circle, Bristol, PA 19007, USA.

NOTES:

COPYRIGHT © 2013 Megatouch, LLC.

Please read the enclosed license agreement. Operation of this game constitutes acceptance of the Megatouch Software License Agreement.